

Continuation of the All Town Reconciliation Strategies in the Limpopo Province

Strategies Steering Committee Workshop No. 1

26 April 2013

Presented by Tendani Nditwani

DWA: National Water Resource Planning



water affairs

Department:
Water Affairs
REPUBLIC OF SOUTH AFRICA

Agenda

1	WELCOME AND INTRODUCTION OF MEMBERS	T. Nditwani
2	ATTENDANCE AND APOLOGIES	T. Nditwani
3	ACCEPTANCE OF AGENDA	T. Nditwani
4	PURPOSE OF WORKSHOP	T. Nditwani
5	ROLE OF THE STRATEGIES STEERING COMMITTEE	T. Nditwani
6	INTRODUCTION OF THE STUDY	T. Nditwani
7	OVERVIEW OF STUDY ACTIVITIES	M. Esterhuizen P van Rooyen
8	BREAK-AWAY SESSIONS (PRIORITY STRATEGIES)	M. Esterhuizen
9	WAY FORWARD/STUDY PROGRAMME	M. Esterhuizen
10	GENERAL	T. Nditwani
11	DATE OF NEXT MEETING AND CLOSURE	T. Nditwani
12	LUNCH	ALL

Item 4: Purpose of the Workshop

- To introduce the study to all Stakeholders (SH)
- To establish and define the role of the Strategies Steering Committee (SSC)
- Facilitate cooperation and interaction with the SH's
- To outline findings during the Inception Phase
- To outline the scope of work, methodology, way forward and preliminary study programme
- To obtain comments and input from SH's
- To prioritise the strategies to be updated



Item 5: Role of Strategies Steering Committee (SSC)

Role of Strategies Steering Committee (SSC)

- To provide executive guidance to the direction and outcomes of the study
- To provide supplementary information and input from a local and regional perspective
- To facilitate strategic linkages with other initiatives / forums
- To disseminate information from study into the relevant organizations
- Incorporate strategies' recommendations into development plans such as WSDP's, IDP's etc.
- To facilitate the acceptance and sign-off of the updated Reconciliation Strategies

Stakeholder Engagement

- Communication Protocol
 - **General Enquiries**
 - Contact the Study Administrator / Liaison Officer:
 - Northern Planning Region: Ms Leoni le Roux
(leonilr@uwp.co.za)
 - **Study Management**
 - Contact the DWA Study Leader:
 - Northern Planning Region: Mr Tendani Nditwani
(NditwaniT@dwa.gov.za)

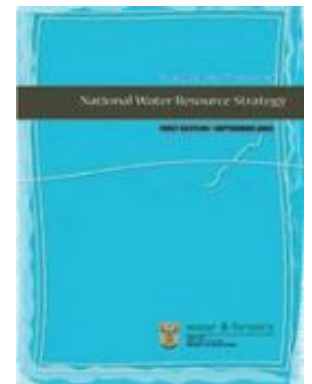
Stakeholder Engagement cont.

- Communication Protocol
 - **Technical Enquiries**
 - Contact the PSP
 - Northern Planning Region Deputy Study Leader: Ms Monja Esterhuizen (monjae@uwp.co.za)

Item 6: Introduction of the Study

Background

- 2004: National Water Resource Strategy (NWRS), First Edition
 - Chapter 2 and Appendix D summarised the water resource situation
 - Addressed the scarcity of water in South Africa
 - Fresh water is limited and unevenly distributed
 - Situation varied from area to area



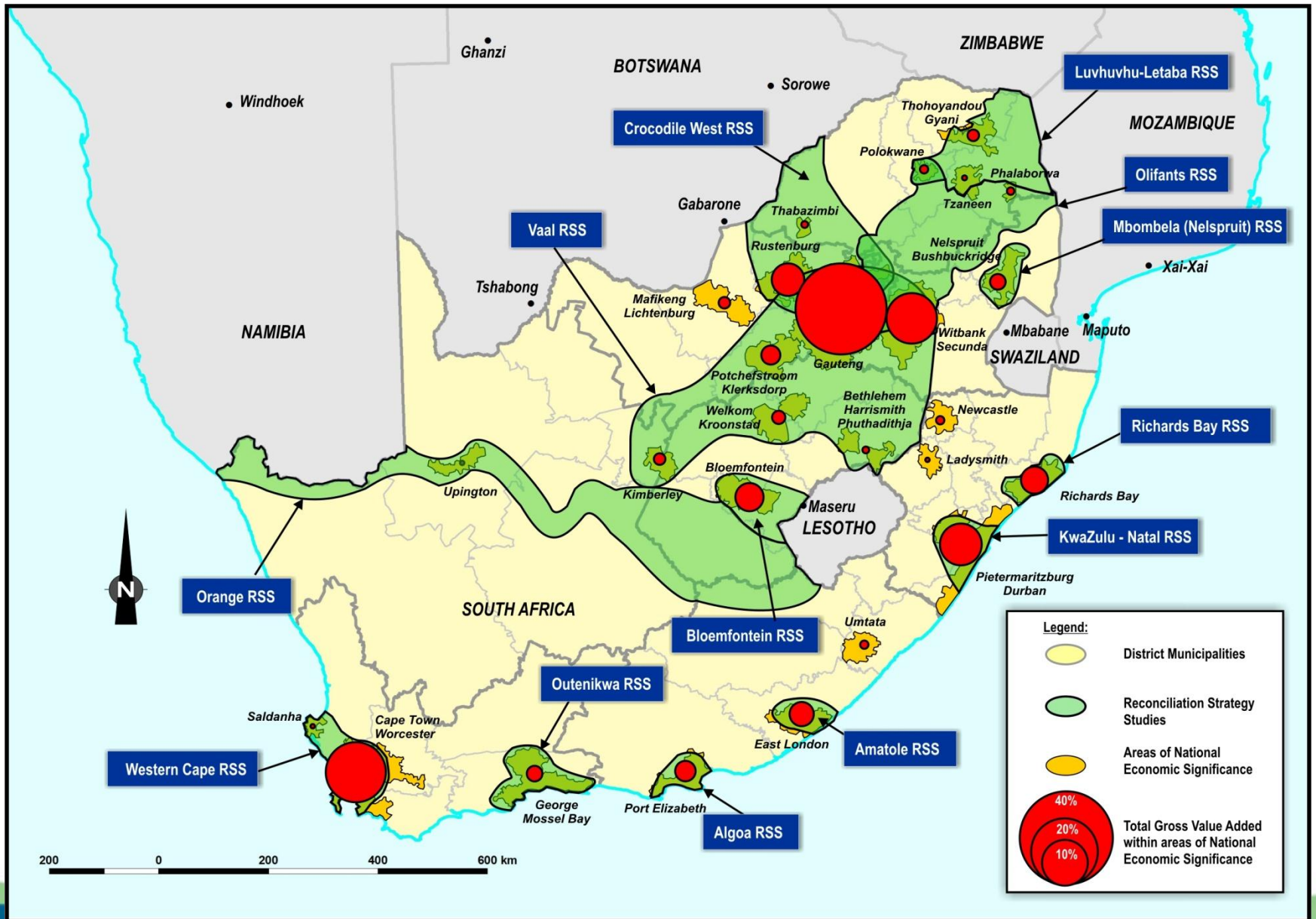
Background cont.

- NWRS information on a broad overview level
- Can for instance not be used to build infrastructure
- More detail required
- Internal Strategic Perspectives (ISP's) – Catchment Management Area level, but still not detailed enough
- Reconciliation Strategies for:
 - Large systems supplying areas of large economic importance
 - Rest of towns covered in “All Town Strategies”

Background cont.

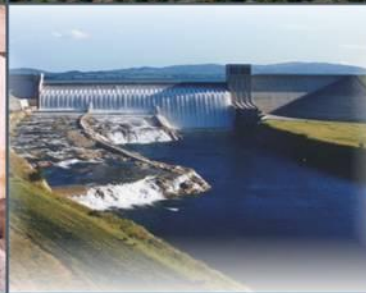
- What is reconciliation:
 - Develop future water requirement scenarios in consultation with users
 - Investigate all possible water resources and other interventions
 - Investigate all possible methods for reconciling the water requirements with the available resources
 - Make recommendations for development and implementation of interventions

NSDP: Key demand centres





water affairs
Department:
Water Affairs
REPUBLIC OF SOUTH AFRICA

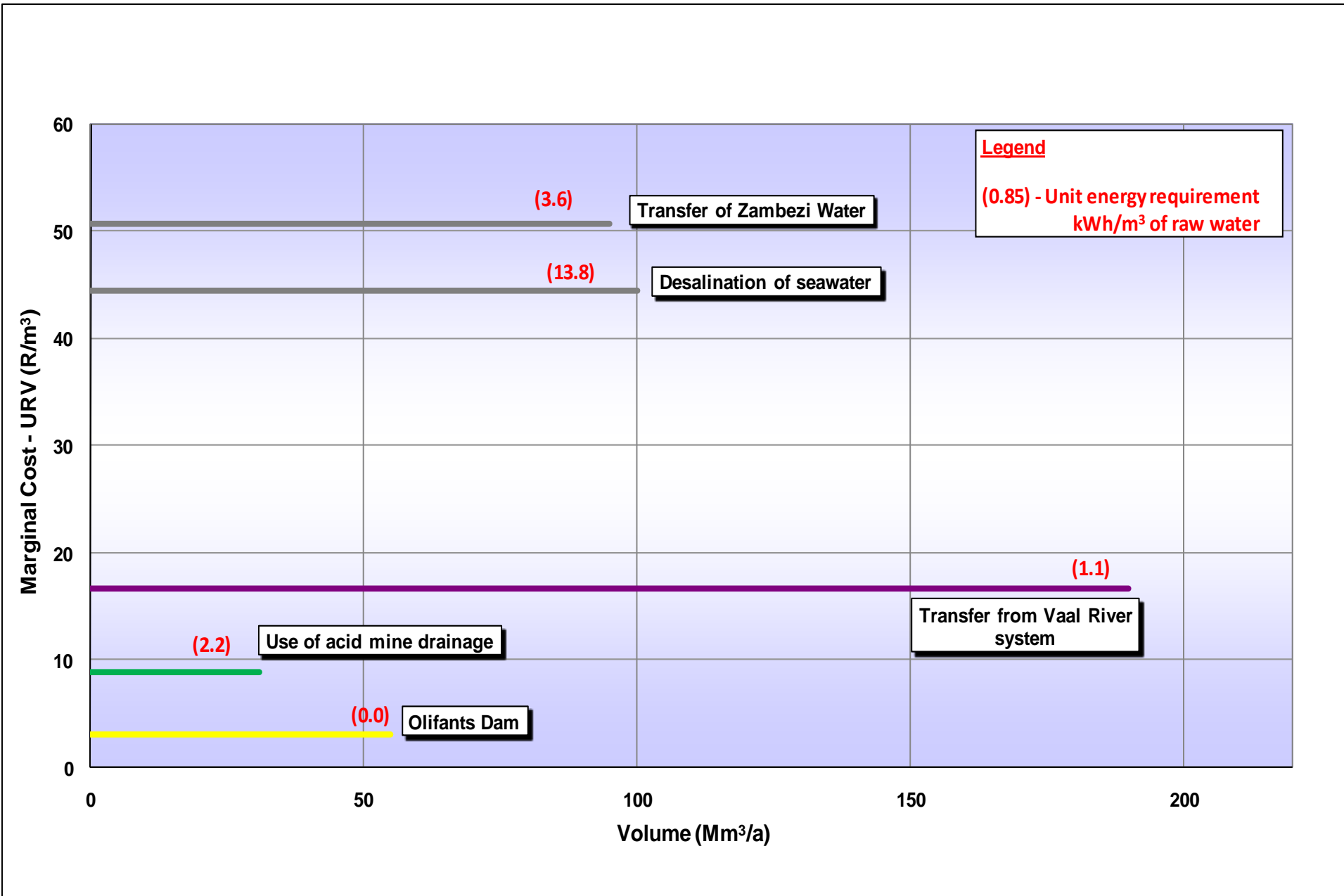


REPORT NO: P RSA 000/00/12610

Assessment of the Ultimate Potential and Future Marginal Cost of Water Resources in South Africa

SEPTEMBER 2010

Olifants River system

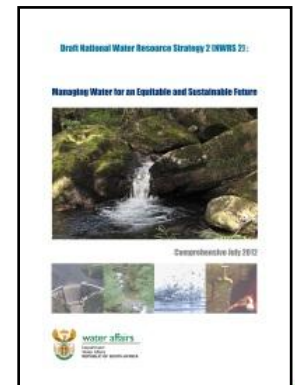


Background cont.

- Reconciliation Strategies – Key Messages:
 - Confirmed broad reconciliation strategies already in the NWRS1
 - Added desalination as a strategy

Background cont.

- 2012 National Water Resource Strategy (NWRS 2, draft)
 - NWRS 2 is building on NWRS 1, not replacing it
 - Putting water at the centre of integrated development planning and decision making
 - Ensuring water for equitable growth and development
 - Protecting water ecosystems
 - Implementing water use efficiency and WC/WDM
 - Optimising water resources
 - Achieving effective water governance and Developmental Water Management

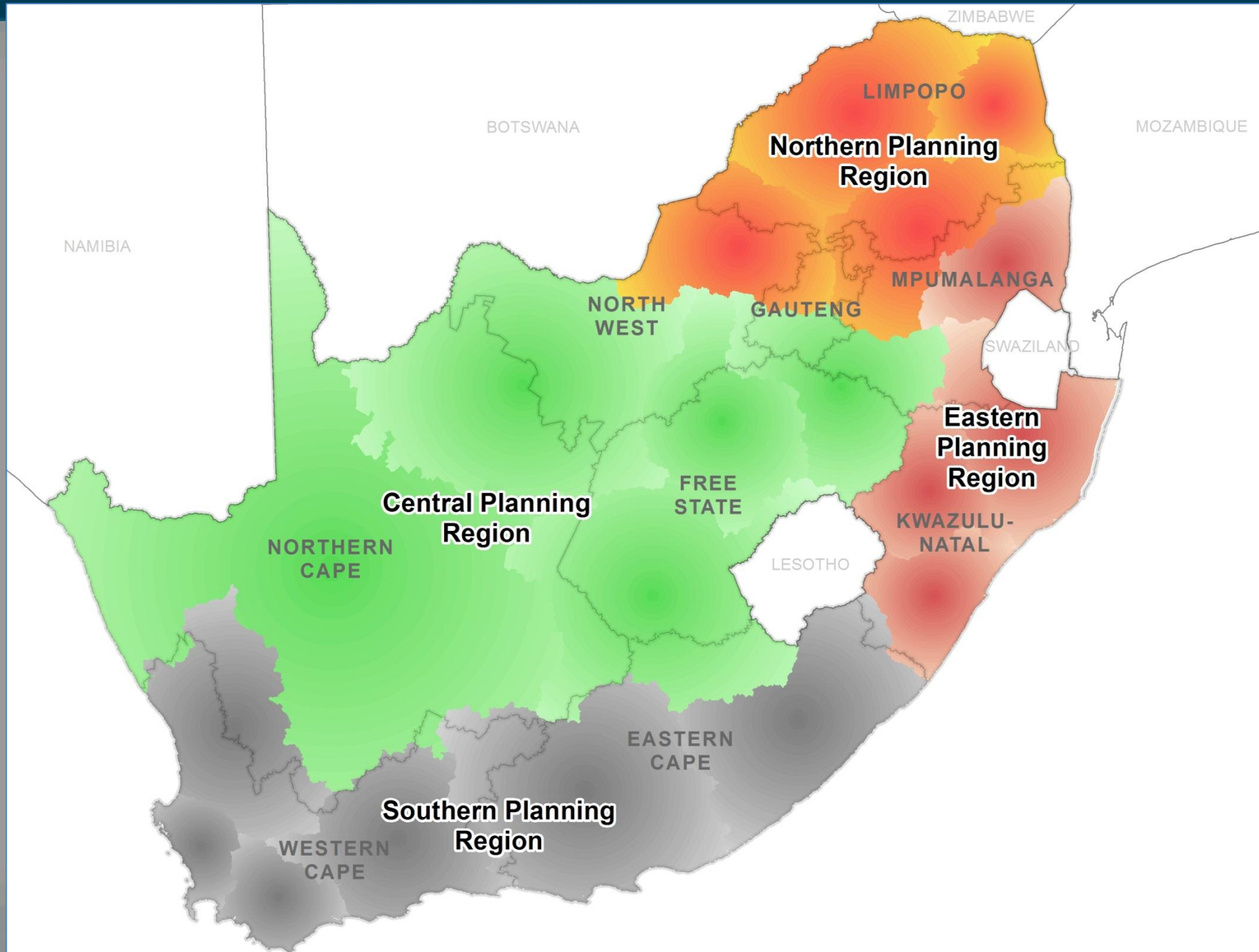


Background to This Assignment

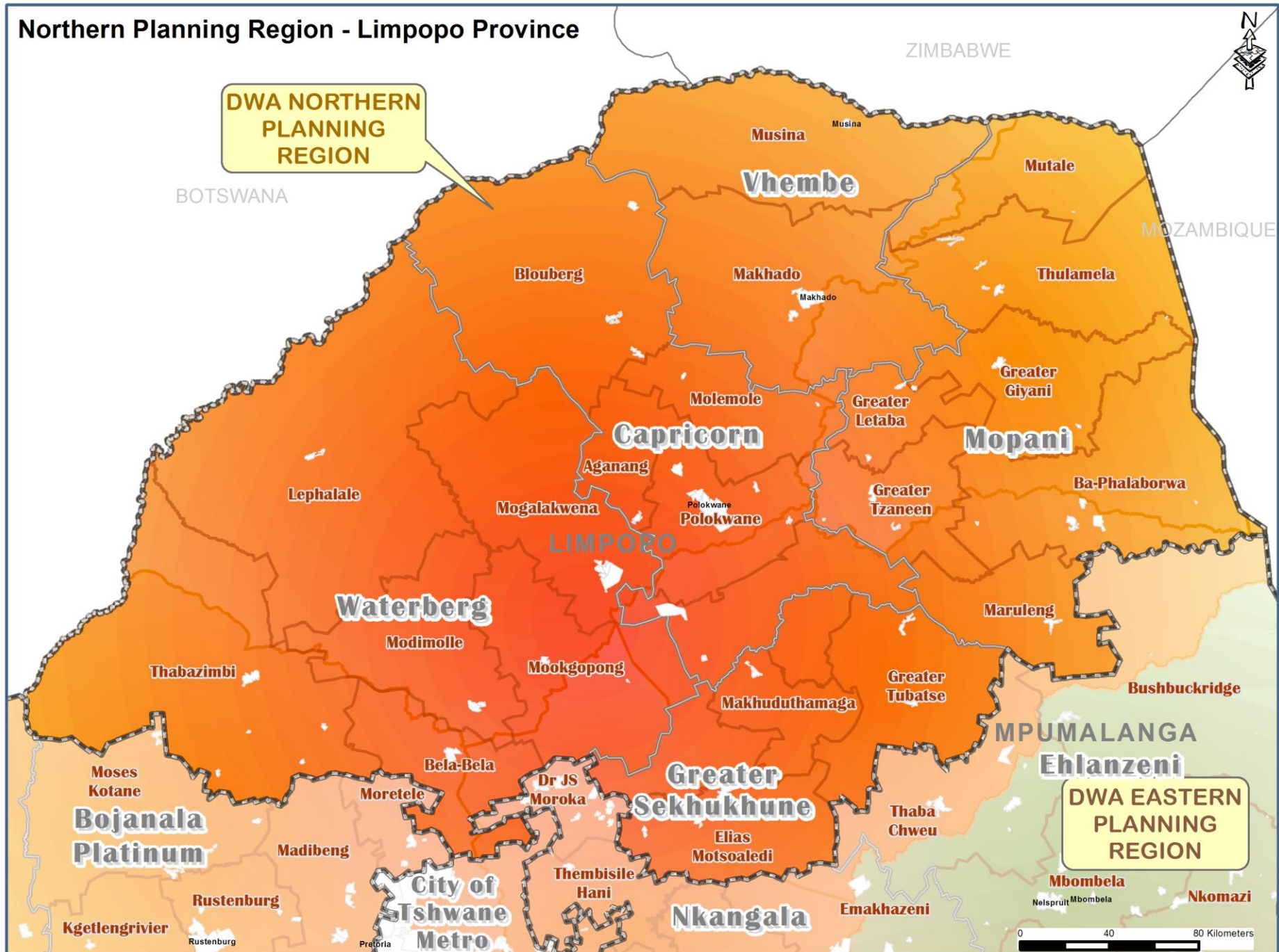
- 2008: Development of Reconciliation Strategies for All Towns
- Key general messages from All Town Studies (2008-2011)
 - Improved management will solve largest portion of immediate problems
 - 55 Towns identified in Limpopo Province where water requirements exceed water resources availability
 - Minimal metering, outdated Water Use Licenses
 - High per capita use in many towns pointing to WC/WDM potential (see also WRC Report: TT522/12)
 - Groundwater remains a feasible source of water for many towns

Background to this Assignment cont.

- Key general messages from All Town Studies (2008-2011) cont.
 - Infrastructure constraints rather than water resource availability limitations
 - Rudimentary strategies for all towns – improvement required
- 2012: Continuation of the DWA Planning Regions' All Town Reconciliation Strategies: Phase 1
 - Update and review priority strategies - three year appointment (till 2015)



Northern Planning Region - Limpopo Province



Purpose of Study

- This assignment is the first review and updating of priority strategies
 - Budget constraints dictated that not all strategies can be reviewed and updated during this assignment
- It will be an **on-going** process even after these studies end
- Assist DWA and Water Services Authorities (WSAs) to:
 - Update and revise priority strategies
 - To remain technically relevant and sustainable
 - Reconcile water requirements and water resources (up to 2035)

Purpose of Study cont.

- Assist DWA and WSAs (cont.) to:
 - Evaluation of interventions where shortfalls occur
 - Management and/or infrastructure
 - Align strategies with known development planning processes
 - Provide recommendations for the sustainable management of water resources
- Promote the use of strategies' information in the local, district and national planning environments

All Town Reconciliation Strategies

What is it?

- Plans of action or policy designed to ensure sufficient water is made available to towns over the next 20 years.
- Uses existing information collected (building blocks) on
 - water requirements
 - water use and infrastructure
 - water resources
 - WC/WDM
- Develop scenarios to meet water requirements for current and future use, including optimisation of local resources, improved water services and water resource management

All Town Reconciliation Strategies

What is it? Cont.

- It aims to answer these questions:
 - How much water is needed? - now and in the future
 - What water resources are available or can be made available?
 - Which interventions can be consider to achieve a balance between water needs and supply?
- Focuses on the projected annual water balance (high and low growth scenarios)
- Also consider the accuracy of all components that make up the water balance

Reconciliation Strategies: Contents

EXECUTIVE SUMMARY

1 Introduction

2 Population and
Demographics

3 Current Water
Requirements

4 Water Requirement
Projections

5 Water Resources

6 Water Balance

7 Water Supply Infrastructure

8 Sanitation

9 Reconciliation Options

10 Water Balance – With
Reconciliation Options

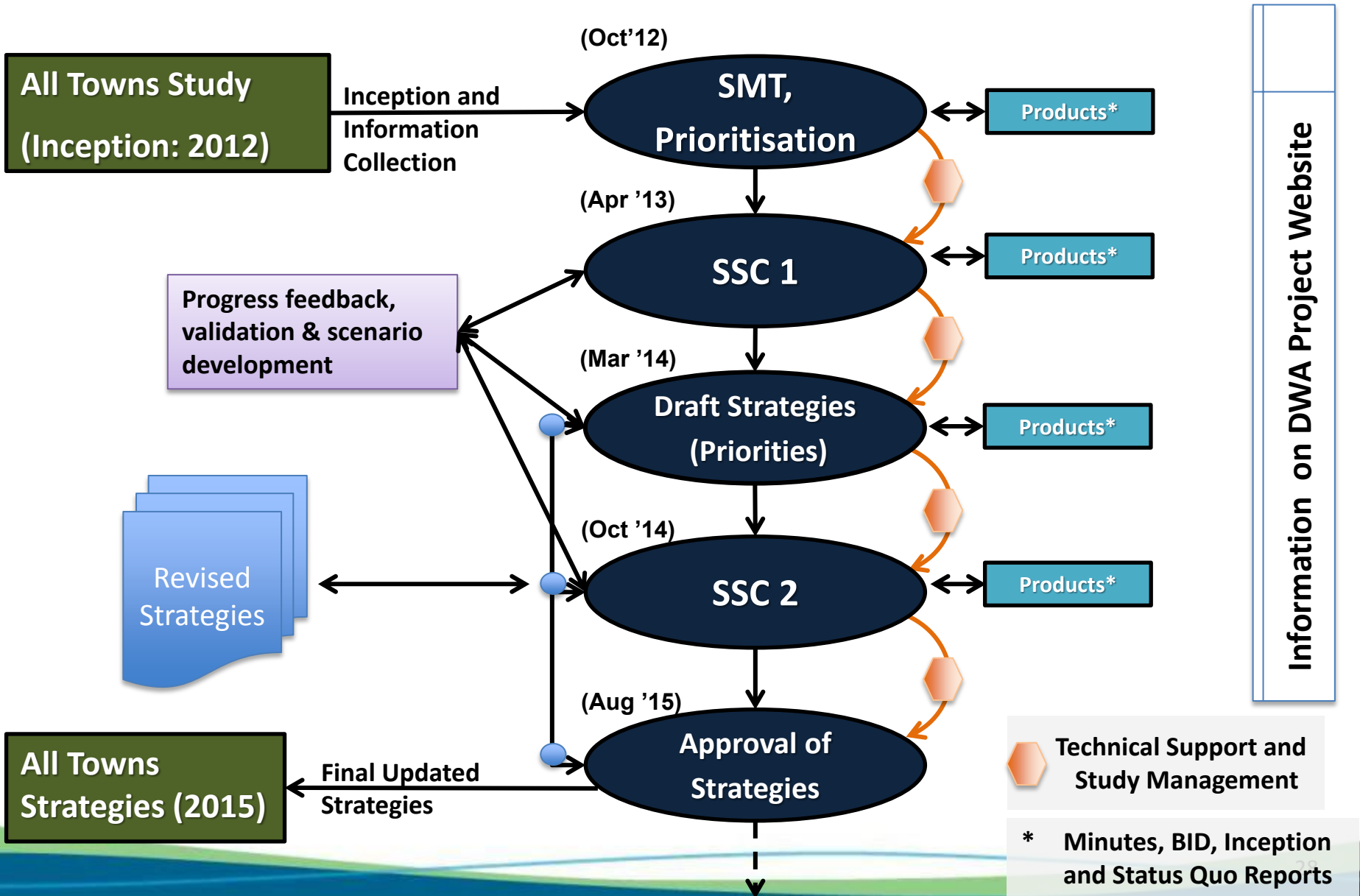
11 Recommendations

Item 7: Overview of Study Activities

Study Phases

- Inception
- Updating Priority Reconciliation Strategies
- Incorporate Comments and Finalise Reconciliation Strategies
- Study Closure

Study Communication & Process



Inception

- Inception
 - Establish Study Management Teams (SMT)
 - Reconnaissance review of strategies
 - Develop District Municipality Summary Reports
 - Preliminary prioritisation of strategies
 - SSC Workshop 1 (this workshop)
 - Inception Report with adjusted project programme and applicable study budget

1. Study Management Team (North)

- Northern Planning Region
 - DWA Study Leader: Mr Tendani Nditwani - Chief Water Resource Planner: NWRP (North)
 - DWA Regional Offices (Water Sector Support, Water Resources, RBIG officials)
 - Gauteng Province
 - Limpopo Province
 - Mpumalanga Province
 - North West Province
 - PSP: UWP Consulting (Pty) Ltd in association with WRP Consulting Engineers (Pty) Ltd

2. Reconnaissance Review of Strategies

- Northern Planning Region
 - 211 rudimentary strategies (296 water supply scheme areas)
- Limpopo Province
 - 154 rudimentary strategies (263 water supply scheme areas)

3. DM Summary Report

- DM Summary reports developed based on review
- Summary of demographics, water requirements and water balance per individual strategy
- Grouped per District and Local Municipality
- Navigable Excel file
- DM Summary Reports available from DWA – Regional Offices

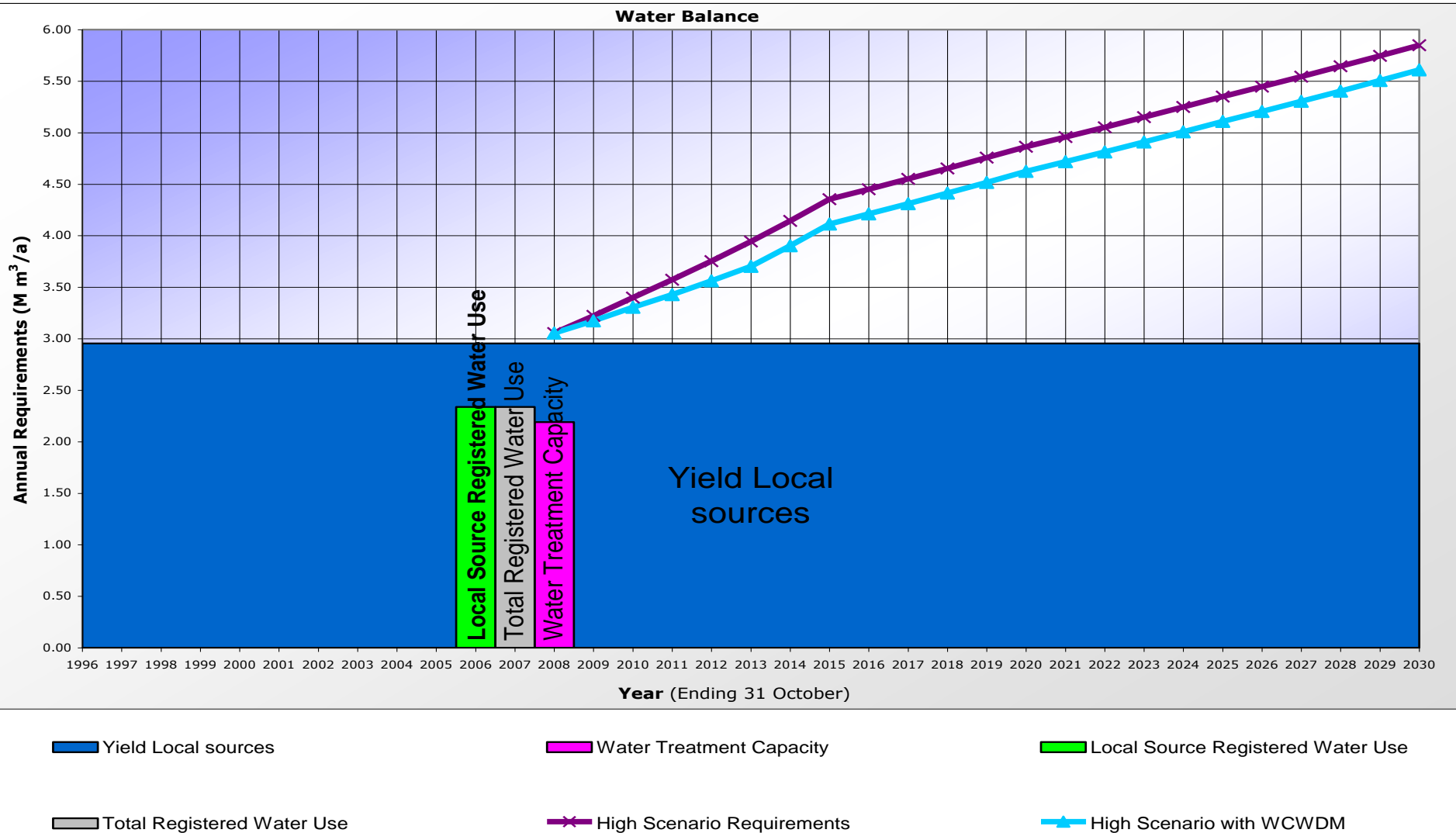
4. Preliminary prioritisation of strategies

- Strategies are categorised as follows:

Water Balance Status	Category / Priority	
Town is currently in deficit	4	High
Town will be in deficit within 5 Years	3	Medium to high
Town will be in deficit in 5 to 10 years	2	Medium
Town will be in deficit after ten year or later	1	Low

Example

- i.e. Category 4: Currently in Deficit



Prioritisation Process

- **Step 1:** Identification of Category 4 strategies (towns with a water balance currently in deficit)
- **Step 2:** Eliminate towns where solutions are in an advance stage of planning or implementation (RBIG projects)
- **Step 3:** Add towns where RBIG or other processes are in an early stage of planning – can still be influenced by strategies' recommendations
- **Step 4:** Add any other hot spot areas identified on a national, provincial or local strategic level

Prioritisation Process cont.

- Key focus: **water resource** availability and quality to meet current and future water requirements
- The preliminary priority selection was confirmed at a screening session held with DWA: National Water Resource Planning (North) and the DWA Regional Office (Limpopo Province)
- Requesting confirmation of priorities from SSC (this workshop)

DM Summary

- Mopani District Municipality (MDM)

LM	Strategies	Population (2010)	In Surplus	In Deficit	Preliminary Priority (schemes)
LIM331: Greater Giyani	5	188 157	5	0	5
LIM332: Greater Letaba	3	152 626	2	1	1
LIM333: Greater Tzaneen	7	474 974	7	0	0
LIM334: Ba-Phalaborwa	3	133 746	3	0	0
LIM335: Maruleng	3	106 937	2	1	0
Total	21	1 056 440	19	2	6

DM Summary cont.

- Vhembe District Municipality (VDM)

LM	Strategies	Population (2010)	In Surplus	In Deficit	Preliminary Priority (schemes)
LIM341: Musina	2	29 386	2	0	1
LIM342: Mutale	5	59 625	5	0	0
LIM343: Thulamela	9	636 194	8	1	4
LIM344: Makhado	13	632 586	10	3	3
Total	29	1 357 791	25	4	8

DM Summary cont.

- Capricorn District Municipality (CDM)

LM	Strategies	Population (2010)	In Surplus	In Deficit	Preliminary Priority (schemes)
LIM351: Blouberg	11	201 555	10	1	0
LIM352: Aganang	6	160 106	6	0	0
LIM353: Molemole	2	111 601	2	0	0
LIM354: Polokwane	14	522 146	14	0	11
Total	33	995 408	32	1	11

DM Summary cont.

- Waterberg District Municipality (WDM)

LM	Strategies	Population (2010)	In Surplus	In Deficit	Preliminary Priority (schemes)
LIM362: Lephalale	5	81 075	4	1	1
LIM364: Mookgopong	6	32 741	6	0	0
LIM365: Modimolle	3	64 300	3	0	0
LIM366: Bela-Bela	3	33 740	3	0	0
LIM367: Mogalakwena	5	328 323	2	3	1
Total	22	540 179	18	4	2

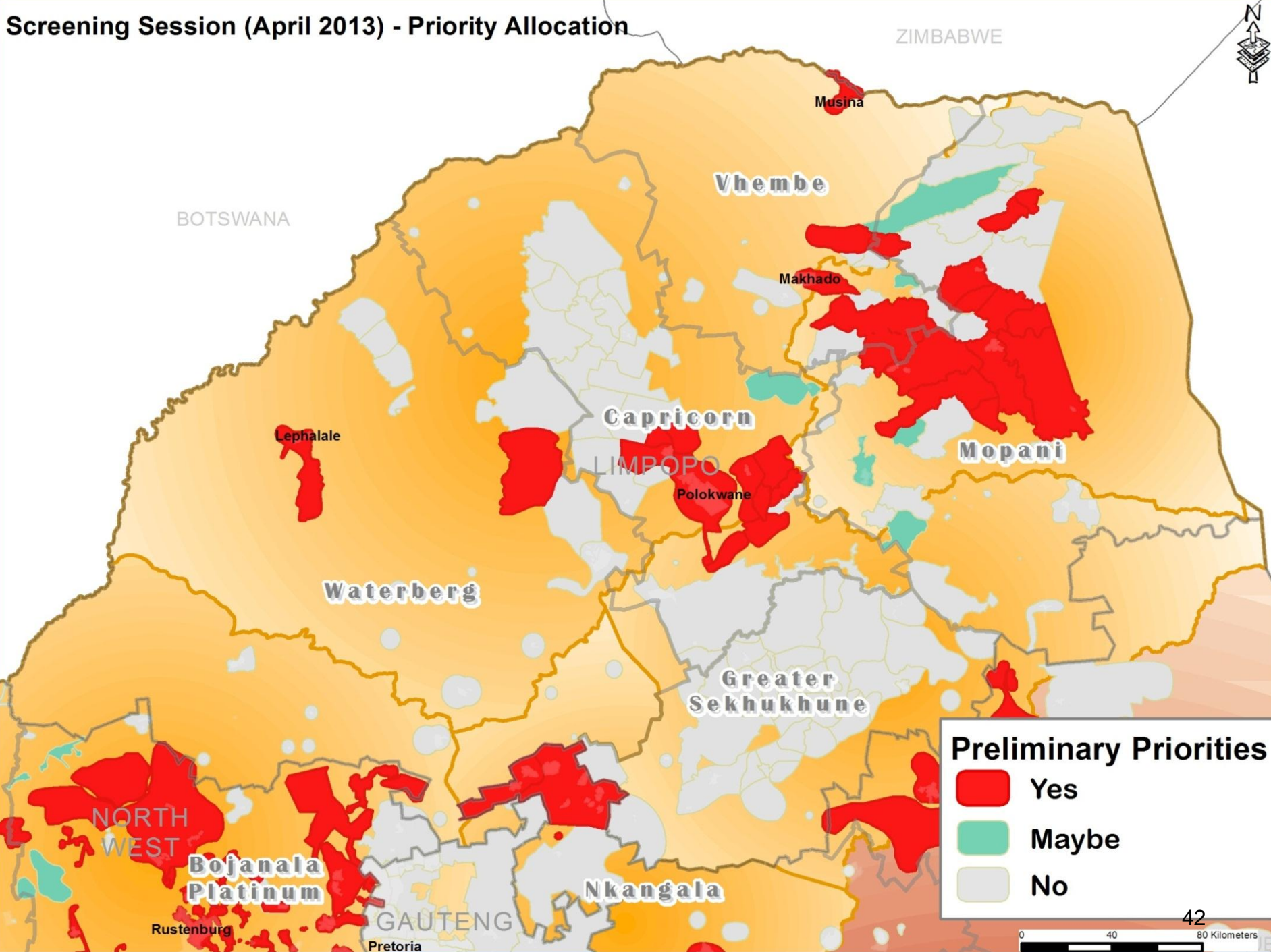
DM Summary cont.

- Greater Sekhukhune District Municipality (GSDM)*

LM	Strategies	Population (2010)	In Surplus	In Deficit	Preliminary Priority (schemes)
LIM472: Elias Motsoaledi	7	264 368	5	2	0
LIM473: Makhuduthamaga	12	300 639	10	2	0
LIM474: Fetakgomo	3	114 832	2	1	0
LIM475: Greater Tubatse	10	342 130	9	1	0
Total	32	1 021 969	26	6	0

- * Most consumers to benefit from the newly constructed De Hoop Dam

Screening Session (April 2013) - Priority Allocation



Preliminary Priorities

- Yes
- Maybe
- No

Updating Priority Reconciliation Strategies

- Detailed assessment of strategies according to the following themes:
 - Demographics & economic drivers, incl. migration
 - Water requirements (importance of metering!)
 - WC/WDM
 - Infrastructure
 - Water resources (surface and groundwater)
 - Water quality
- Collate, assess data and identify gaps

Updating Priority Reconciliation Strategies cont.

- Develop coherent water requirement scenarios
 - Low growth scenario
 - High growth scenario
- Compile water balance diagrams (up to 2035)
- Identify potential development scenarios (management and infrastructure) for reconciliation of water requirements and water resources
- Submission of updated priority strategies to DWA
- SSC Workshop 2

Updating Reconciliation Strategies cont.

- Improve the level of confidence in building blocks used for scenario development
- Present the best available situation for short and long term planning
- Develop firm recommendations to be taken into account during planning (WSDP, IDP, water resources) and implementation of studies and projects
- Make a strategy applicable to the intended area of study – clustering of water supply areas
- Our water: to make “some for all” a reality

Incorporate Comments and Finalise Reconciliation Strategies

- Incorporate comments received from SSC 2
- Include pertinent information that may impact the outcome of a strategy
- Finalise and submit reconciliation strategies
- Update the DM Summary Reports

Study Closure

- Signing off updated strategies by appropriate officials
- Disseminate final strategies and DM Summary Reports via DWA website
- Skills transfer workshop to DWA officials
- Compile study closure documentation – for this appointment

Item 8: Break-away Sessions

- Session for each DM facilitated by team member
- Confirm prioritised strategies
- Solicit information from SSC members for inclusion in the strategies

Break-Away Sessions

(Grouping: District Municipalities)

- Group 1: Mopani DM
- Group 2: Vhembe DM
- Group 3: Capricorn DM
- Group 4: Waterberg DM
- Group 5: Greater Sekhukhune DM

Item 9: Way Forward/Study Programme

- Inception (Current)
- Continuation of the Reconciliation Strategies' Development
 - Detailed assessment of prioritised strategies
 - Update strategies
 - Submission of revised strategies to DWA (continuous)
 - SSC Workshop 2 (October 2014)
 - Presentation, discussion and responses on strategies

Item 9: Way Forward/Study Programme

- Reconciliation Strategies' Revision and Implementation
 - Consider & incorporate comments of SSC Workshop 2
 - Prepare final draft reconciliation strategies
 - Update DM Summary Reports

Item 9: Way Forward/Study Programme cont.

- Study Closure
 - Signing off updated strategies by appropriate officials
 - Disseminate final strategies and DM Summary Reports via DWA website
- End of this appointment: October 2015

Thank You

- Northern Planning Region
 - For enquiries, contact:
 - DWA Study Leader: Mr Tendani Nditwani
 - Tel: +27 (0) 12 336-8189
 - Email: Nditwanit@dwa.gov.za
 - Or
 - PSP Deputy Study Leader: Ms Monja Esterhuizen
 - Tel: +27 (0) 12 424 9709

Study Website: <http://www.dwa.gov.za/projects.aspx>
(go to All Town Strategies – Strategy Portal)